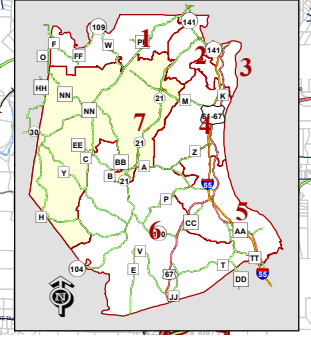
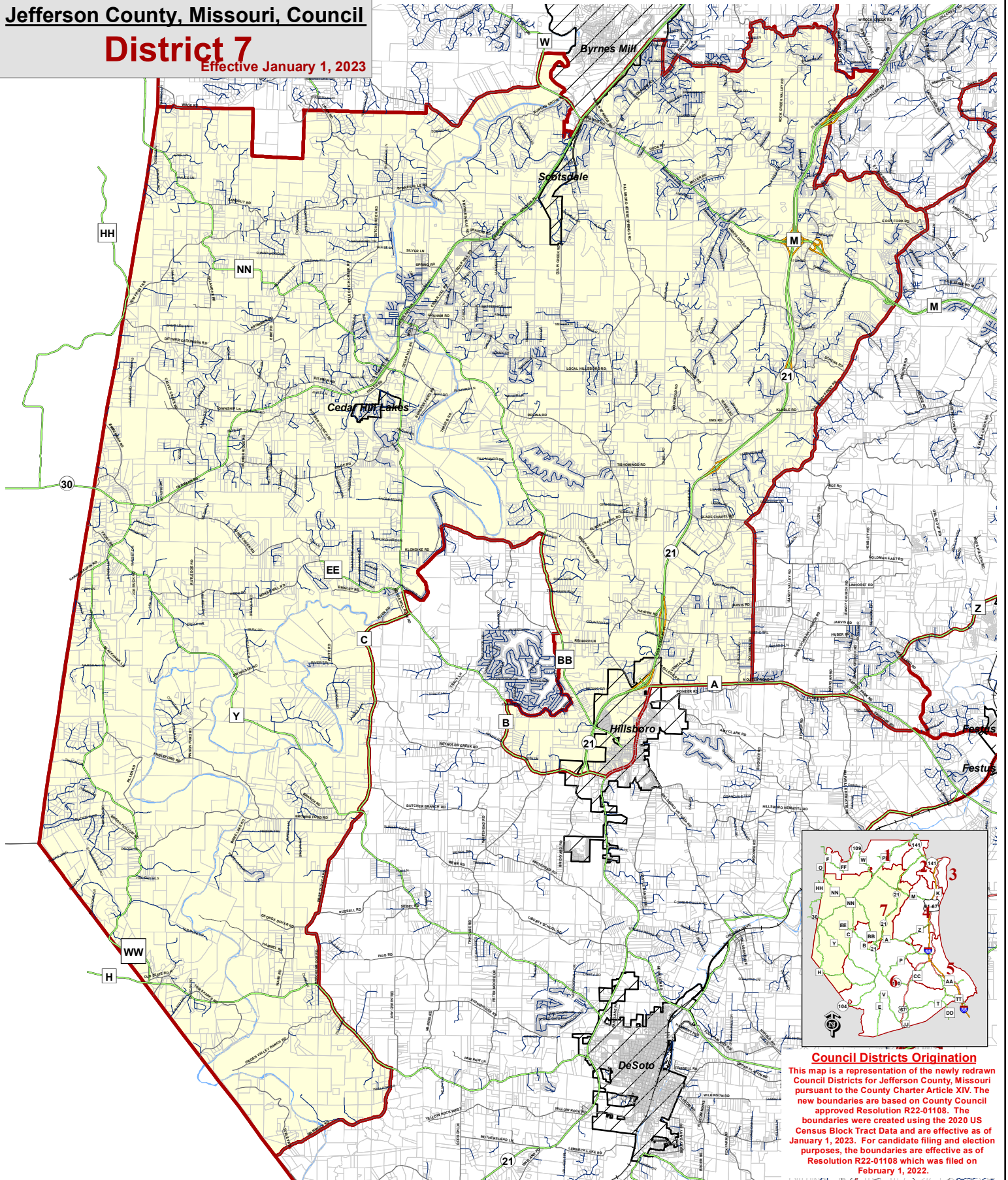


District 7

Effective January 1, 2023

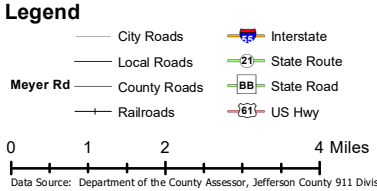


Council Districts Origination
 This map is a representation of the newly redrawn Council Districts for Jefferson County, Missouri pursuant to the County Charter Article XIV. The new boundaries are based on County Council approved Resolution R22-01108. The boundaries were created using the 2020 US Census Block Tract Data and are effective as of January 1, 2023. For candidate filing and election purposes, the boundaries are effective as of Resolution R22-01108 which was filed on February 1, 2022.



Jefferson County
 Department of the County Assessor
Bob Boyer, Assessor
 Print Date: 02/07/2022
www.jeffcomo.org/assessor
glsassessor@jeffcomo.org
 636-797-5466

Caution
 This map is for tax purposes only. It is not intended nor sufficiently accurate to be used for conveyances. Any use other than for tax purposes shall be at the user's risk. The reproduction or copying of this map or any part thereof by any process is prohibited without the written permission of the Department of the County Assessor.
 Pursuant to 2 CSR 90-65.080: "This Cadastral Map is for informational purposes only. It does not purport to represent a property boundary survey of the parcels shown and shall not be used for conveyances or the establishment of property boundaries."
 Authority: section 60.670, RSMo 2016.



- Major Rivers/Creeks
- Municipalities
- Tax Parcels
- Jefferson County, Missouri, Council boundary

1:157,759
 Coordinate System:
 NAD 1983 State Plane
 MO East FIPS 2401 US Foot
 Projection: Transverse Mercator